

N U P I C

NUCLEAR PROCUREMENT ISSUES CORPORATION

Issue: May 2022

Chair Message

By: Roger Mills (PSEG Nuclear)

“I encourage everyone to attend the Vendor conference in June.

This is another unique experience in that this conference has a theme: 50’s, 60’s, and 70’s!”

IN THIS ISSUE

- Page 1
 - Chair Message
- Page 2
 - Attention: Procurement Related Training
- Page 3
 - Technical Specialist Support Provided
 - Nuclear Fuel Committee
- Page 4-5
 - NEI 14-05A, Revision Implementation
- Page 6
 - What is IER L2-4?
- Page 7-9
 - 2022 NUPIC Vendor Conference
- Page 10
 - Future NUPIC Meeting Dates & Locations - Consider Bringing Your Spouse!
- Pages 11-16
 - 2022 Joint Audit and Limited Scope Audit Schedule April - December
- Pages 17-18
 - 2022 Survey Schedule July - December

Chair Message

Greetings!

I’m sure that many of our Auditors are back on the road in a more aggressive manner, meaning multiple weeks of Auditing in a row. Having just completed a five straight week Audit commitment, it is nice to have a couple of weeks at home before heading back out.

Always of concern to the Auditors and the Steering Committee is the COVID numbers around the country and around the world. While most of the numbers appear to be going down, we must still ensure we are protecting ourselves and each other. Please keep social distancing, masks, and vaccines in mind as a great tool to help prevent the spread or minimize the effects of COVID.

Will we be doing business differently in the future? The answer would be yes, I think so. As much as we try to grasp the concept of needed change due to the days of COVID, we are also trying to return to what we would call normal. Normal to us is three NUPIC Conferences per year and all audits conducted in person (Performance-Based). Some utilities are still not allowing some travel and we have to respect their decision. There is also a cost with respecting that decision. When we reserve hotels for conducting our conferences, an expectation is built in to that contract that says we will fill a certain number of hotel rooms during that time period. While we feel the importance of sharing the information from that meeting is more important, NUPIC is still committed to a certain financial amount. We provide access via Teams, Zoom, or one of any other virtual media options and have done so at no cost. For each person that does not attend, it is a reduction of 4 to 7 nights at the hotel. While I’m not looking to put a dollar amount on the safety of each person, we, as an organization, still need to ensure we are doing the correct actions as a business.

You’ll notice that this will be the first time that we are charging for remote access to the conference. While the amount is truly minimal compared to the cost of being at the conference in person, it will provide an off-set for people that are not able to be there in person.

NUPIC is a non-profit organization and we need to ensure we are doing the right thing as an organization.

Now, having said all that, I encourage everyone to attend the Vendor conference in June. This is another unique experience in that this conference has a theme: 50’s, 60’s, and 70’s! Now is the time to start prepping. Get out your poodle skirts, your white T-Shirts, and your Fringy vests and join the fun on Wednesday night! Please know that we will be all business during the conference on Wednesday and Thursday and will have lots of great topics.

I hope to see all of you there. Please, be safe in all your travels,
Roger



N U P I C

NUCLEAR PROCUREMENT ISSUES CORPORATION

ATTENTION: PROCUREMENT RELATED TRAINING

FOR VENDORS AND NUPIC MEMBERS PROVIDED BY ELECTRIC POWER RESEARCH INSTITUTE UNIVERSITY (EPRI-U) IN PERSON OR ONLINE

*By: Marc Tannenbaum
Electrical Power Research
Institute (EPRI)*

Nuclear Utility Procurement Course - \$1400 (Professional Development Hours 21.5) :

Through the Joint Utility Task Group (JUTG), EPRI has developed a comprehensive set of guidelines to assist its member utilities in procurement, documentation, source verification, audits, receipt inspection, testing, and acceptance of commercial grade items for use in safety-related nuclear applications. In addition, a unique training course has been developed to provide instruction on the use and application of the guidelines and how to continuously improve each licensee’s commercial grade dedication program. The three-day course provides detailed guidance on performing safety classifications, equivalency evaluations, and commercial grade dedication, as well as other issues related to materials management. The comprehensive course uses lectures, examples, exercises, and discussion groups to address key procurement issues facing the industry.

Nuclear Utility Procurement (3002015153)
 May 10-12, 2022 – Distance Learning
 July 11-13, 2022 - In-person at EPRI in Charlotte, NC
 December 6-8, 2022 - In-person at EPRI in Charlotte, NC

Procurement of Reactor Coolant Pressure Boundary Replacement Items \$1500 (Professional Development Hours 12.5) :

This course discusses basic concepts of the ASME Code as they pertain to the procurement process at nuclear power plants. The course is ideal for the Procurement Engineer that has recently been assigned to the procurement engineering organization; however, seasoned engineers will also find the information useful in resolving long-standing procurement issues associated with the ASME Code. The course provides a basic understanding of how the ASME Code can impact procurement, how it is structured, and how to address situations where replacement items cannot be procured to the original construction Code of record.

Procurement of Reactor Coolant Pressure Boundary Items (ASME Procurement) (3002015154)
 July 14-15, 2022 – In-person at EPRI in Charlotte, NC

Also EPRI-U offers Computer-based classes open to all: see below list with live link by product # or search at

<https://www.epri.com/epri-u>

| Course | Product Number |
|---|----------------------------------|
| Technical and Quality Requirements Computer-Based Training (LMS) | 3002020811 (LMS) |
| Item Equivalency Evaluation Computer-Based Training (LMS) | 3002018278 (LMS) |
| Commercial Grade Dedication Basics (LMS) | 3002015921 (LMS) |
| Procurement Engineering Safety Classification CBT (PESC CBT), version 1.0 | 3002020810 (LMS) |
| Undeclared Digital Content Computer-Based Training 2017 (UDC CBT) | 3002020809 (LMS) |
| Counterfeit, Fraudulent, and Suspect Items (CFI), Version 2.0 | 3002015960 (LMS) |
| Technical Specialist Training (TST) for Audits and Surveys, Version 2.1 | 3002015959 (LMS) |
| Procurement Engineering Fundamentals v1.0 | 3002005958 (LMS) |
| Quality Control Receipt Inspection – Computer-Based Training | 3002013801 (LMS) |



N U P I C

NUCLEAR PROCUREMENT ISSUES CORPORATION

TECHNICAL SPECIALIST SUPPORT PROVIDED

*By: Rick Way & Robert Villegas
Electrical Power Research Institute (EPRI)*

Just in case you didn't know, EPRI can provide a Technical Specialist for NUPIC audits. For example, EPRI has experts in fuels, engineering, nondestructive examination, and vessel internals that can and have been used during audits in specific technical areas. If an EPRI Technical Specialist is needed for a NUPIC audit, please allow a 90-day notice prior to the audit, so we can align the technical resources. The EPRI Project Manager/Technical Experts are involved in many different areas and need time to align with their project work and travel requirements.

Contact: Rick Way (rway@epri.com) or **Robert Villegas** (rvillegas@epri.com)

NUCLEAR FUEL COMMITTEE

By: John Larson, NFC Chair

There is one NUPIC Committee that involves every member; the Nuclear Fuel Committee (NFC). NFC activities revolve around the 3 US fuel fabricators: Global Nuclear Fuel (GNF), Westinghouse, and Framatome. Shared oversight activities are coordinated by 3 "Affinity Groups" (AGs) that pool customer resources for shared quality and technical surveillances. These surveillances are posted on the NUPIC website but restricted for viewing and download to members with active fuel contracts. Each AG meets annually to plan those activities, and jointly each September as part of the NUPIC Fall Meeting. This year the Annual Joint AG Meeting (or also referred to as the NFC Committee Meeting) will be held on Monday afternoon, September 12, in Philadelphia PA, in the same hotel venue that will continue with the NUPIC Fall Meeting that follows on Tuesday – Wednesday. A highlight of each annual meeting is the presentation by quality management representing the fabricator that received a NUPIC audit during that year's audit cycle. This year we will hear from a representative of Global Nuclear Fuel to present a summary of the results of the NUPIC Audit completed July 25 – August 5, and an overview of planned corrective actions. Each AG Chair also makes a presentation.

The AGs are chaired as follows:

GNF – Brian Miller EXL / John Larson NPP

Westinghouse - Jeffrey Austin DOM / Tim Czuba ENT

Framatome - Michelle Hynes EXL / Andrea Boynton DPC

Future activities include seeking more participation from international NUPIC Members. The potential exists to involve these members more effectively where international locations support US fabricators, and the possibility of learning more about other fuel fabricators in other parts of the world and the oversight experiences and learnings that help all of us improve our effective oversight.

Following the Fall 2022 Meeting in Philadelphia, Andrea Boynton of Duke Power Company will be taking over as the Chair of this committee.



N U P I C

NUCLEAR PROCUREMENT ISSUES CORPORATION

NEI 14-05A, REVISION IMPLEMENTATION

By: Earl R. Mayhorn, AmerenUE

Effective June 2, 2021, ISO/IEC 17025:2005 became invalid and only accreditations to ISO/IEC 17025:2017 are recognized for calibration and testing under the International Laboratory Accreditation Cooperation (ILAC) Mutual Recognition Agreement (MRA). Also, effective June 2, 2021 NEI 14-05A, "Guidelines for the Use of Accreditation in Lieu of Commercial Grade Surveys for Procurement of Laboratory Calibration and Test Services", Revision 0 was superseded by NEI 14-05A, Revision 1. NEI 14-05A, Revision 1 prescribes an acceptable approach for utilizing accreditation to ISO/IEC 17025:2017 in lieu of a commercial grade survey during the commercial grade dedication process. This process is known as the ILAC accreditation process. The NRC's acceptance of NEI 14-05A, revision 1, came with new requirements for use of the ILAC accreditation process. As a refresher, the current requirements for use of the ILAC accreditation process are as follows with the bolded and italicized items being new.

The method the purchaser needs to follow, and document in their QA program, consists of:

1. A documented review of the supplier's accreditation is performed and includes a verification of the following:
 - a. ***The calibration or test laboratory holds accreditation by an accrediting body recognized by the ILAC MRA. The accreditation encompasses ISO/IEC-17025:2017, "General Requirements for the Competence of Testing and Calibration Laboratories."***
 - b. For procurement of calibration services, the published scope of accreditation for the calibration laboratory covers the needed measurement parameters, ranges, and uncertainties.
 - c. For procurement of testing services, the published scope of accreditation for the test laboratory covers the needed testing services including test methodology and tolerances/uncertainty.
 - d. ***The laboratory has achieved accreditation based on an on-site accreditation assessment by the selected AB within the past 48 months. The laboratory's accreditation cannot be based on two consecutive remote accreditation assessments.***
2. The purchase documents require that:
 - a. ***The service must be provided in accordance with their accredited ISO/IEC-17025:2017 program and scope of accreditation.***
 - b. As-found calibration data must be reported in the certificate of calibration when calibrated items are found to be out-of-tolerance. (for calibration services only)
 - c. The equipment/standards used to perform the calibration must be identified in the certificate of calibration. (for calibration services only)
 - d. ***Subcontracting of these accredited services is prohibited.***
 - e. The customer must be notified of any condition that adversely impacts the laboratory's ability to maintain the scope of accreditation.
 - f. ***Performance of the services listed on this order is contingent on the laboratory's accreditation having been achieved through an on-site accreditation assessment by the Accreditation Body within the past 48 months.***
 - g. Any additional technical and quality requirements, as necessary, based upon a review of the procured scope of services, which may include, but are not necessarily limited to, tolerances, accuracies, ranges, and industry standards.

(Continued on Page 5)



N U P I C

NUCLEAR PROCUREMENT ISSUES CORPORATION

NEI 14-05A, REVISION IMPLEMENTATION *(Continued)*

By: Earl R. Mayhorn, AmerenUE

3. It is validated, at receipt inspection, that the laboratory’s documentation certifies that:

- a. The contracted calibration or test service has been performed in accordance with their ISO/IEC-17025:2017 program, and has been performed within their scope of accreditation, and
- b. The purchase order’s requirements are met.

As a result of these additional requirements, users of the process will need to ensure the evaluation referenced in item 1 above includes verification the laboratory's accreditation or reaccreditation is based on an on-site assessment at the laboratory's facility within the past 48 months. Based on a two (2) year / 24 month accreditation period, laboratories accredited/reaccredited in 2020 will be due for reaccreditation in 2022. Special attention must be paid to the accreditation of these laboratories since many of the accreditations performed in 2020 were conducted using remote techniques by accreditation bodies (AB's) due to travel restrictions caused by the global COVID-19 pandemic. Therefore, to comply with the new NEI 14-05A, Revision 1 requirements, users of the ILAC accreditation process must ensure those laboratories undergo an on-site accreditation assessment at their facility in 2022. It is recommended that users review their list of laboratories which have been approved by based on the laboratory's accreditation to ISO/IEC 17025:2017 and contact each laboratory directly to verify the next accreditation assessment is performed on-site at their facility. In addition, purchase orders to such laboratories must specify that performance of the accredited service is contingent on the laboratory's accreditation having been achieved through an on-site accreditation assessment by the Accreditation Body within the past 48 months. These changes are necessary since the NRC's endorsement of the use of ILAC accreditation process was largely based on ABs performing on-site accreditation assessments at laboratories. Prior to 2020, fully remote accreditation assessment were rarely, if ever, utilized.

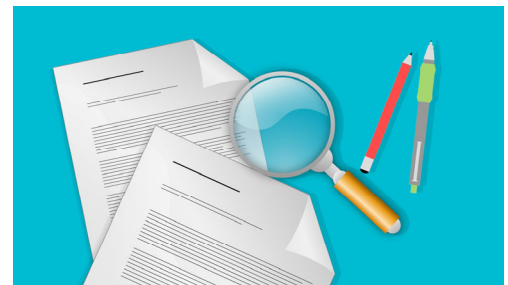
Revision 1 to NEI 14-05A, prohibits the subcontracting of services when utilizing the ILAC accreditation process. The laboratory that is contracted to perform the accredited service cannot subcontract the service. Purchase orders for accredited calibration and testing services utilizing the ILAC accreditation process must indicate that subcontracting of the requested service is prohibited.

Next, the ILAC accreditation process cannot be utilized to commercially dedicate Non-Destructive Examination (NDE) services. If a licensee or 10CFR50, Appendix B supplier decides to commercially dedicate NDE services, the dedication must be performed outside of the ILAC accreditation process without reliance on the laboratory's accreditation to ISO/IEC 17025:2017.

Finally, the ILAC process is intended for use by licensees and suppliers of basic components as a part of the commercial grade dedication process and must be used in conjunction with other NRC-endorsed commercial grade dedication guidance such as EPRI TR3002002982. A commercial grade dedication technical evaluation is required as a part of the ILAC process to document the critical characteristics and acceptance method for calibration and testing services. Sample technical evaluations for both calibration and testing services have been included as attachments to NEI 14-05A, Revision.

Questions can be addressed to the ILACQuestions@nupic.com

Copies of the applicable NEI14-05A, Revision 1 documents can be obtained at <https://www.nupic.com/NUPIC/Home/HotTopics.aspx>





N U P I C

NUCLEAR PROCUREMENT ISSUES CORPORATION

WHAT IS IER L2 21-4?

*By: John Larson
Nebraska Public Power District*

If you have any doubts about the importance of the work we do as nuclear oversight professionals, you should read this article. You will be hearing reference to IER L2 21-4 often during the next few years as nuclear power strives to be the clean and carbon-free energy of choice for the rest of this century. Our efforts to perform effective performance-based audits with cross-functional teams that include technical specialists has contributed to nuclear power becoming a safe and reliable power producer for the nation’s electrical grid. But more improvement is not only possible but required. In September of 2021, the Institute of Nuclear Power Operations (INPO) issued INPO Event Report (IER) Level 2 21-4 “Improving Plant Reliability”. The INPO website explains that “Over the past three years, the nuclear industry has averaged more than 200 Noteworthy - Consequential events per year due to equipment malfunctions or failures and the trend has remained relatively flat. In some cases, significant equipment damage not only heightened operational risks, but enterprise-level risks, as well. Moreover, these consequential events were largely preventable. In order to improve overall industry reliability and significantly reduce precursors to more serious challenges, a renewed focus on preventing equipment-related consequential events is required.”

These consequential events include reactor scrams, shutdowns, down powers, delayed power ascensions, loss of risk significant functions, and emergency system actuations. Taken altogether, these preventable events are estimated to have had a generation impact of more than 38 million MW-hrs, or the equivalent of shutting down the entire US nuclear industry for sixteen days.

To address this problem, INPO and industry personnel have identified several event drivers that include oversight of vendor workmanship and parts quality as contributors. Seven recommendations for nuclear plants are described in the document as follow:

- 1) Setting direction
- 2) Apply Continuous Learning
- 3) Improve Self-Awareness and Self Correction
- 4) Strengthen Risk Recognition
- 5) Enhance Risk-Elimination Bias in Decision-Making
- 6) Establish a Sustainable Parts Quality Process
- 7) Establish High Standards in Vendor and Supplemental Personnel Oversight

All nuclear utility members of INPO were required to submit an implementation plan for this IER by February 22, 2022. Supporting document INPO 22-001, “Parts Quality and Availability to Support Plant Reliability”, builds on industry lessons learned and is intended to help close gaps to excellence in parts quality and to meet the parts quality standards discussed in WANO PO&C 2019-1, Performance Objectives and Criteria, and in INPO Event Report (IER) L2-21-4, Improving Plant Reliability. NUPIC is identified in this document, along with its NIAC counterpart for vendors.



NUPIC

NUCLEAR PROCUREMENT ISSUES CORPORATION

You are invited to attend the....

**30th Annual
NUPIC Vendor Conference**

**Wednesday – Thursday
June 22 – 23, 2022**

at the

***Detroit Marriott*
at the Renaissance Center
*Detroit, MI***

**Hotel Registration Deadline:
May 27, 2022**



N U P I C

NUCLEAR PROCUREMENT ISSUES CORPORATION

NUPIC Vendor Conference Registration Instructions:

Please register for the conference AND your hotel room on www.nupic.com for the conference. On the left side under "Home," select "Future NUPIC Meetings" and select "6/22/2022 to 6/23/2022 - Detroit Marriott..." then select "Register for Meeting."

Vendor Conference: The meeting registration fee is **\$500.00** per attendee. The fee covers the costs for:

- Breakfasts and lunches
- Morning and afternoon refreshments during the meeting
- Wednesday dinner event at the Henry Ford Museum of Innovation
 - ⇒ There will be an optional 50's-70's dress up theme! Please dress up in your favorite 50's-70s apparel while touring the historic Henry Ford Museum.

Electronic copies of meeting presentations will be made available to each attendee. **Guests** of registrants may attend the dinner at a cost of **\$75.00** per person. Payment by either credit card or check is available during registration. If you select payment by check, please submit a check by mail to the address below.

Please make checks payable to NUPIC and include a copy of the email registration confirmation notice to: +

ETHANY Corporation
 c/o Greg Przyjemski – NUPIC Treasurer
 4 S. Main Street Suite 2
 Pittsford, NY 14534

PLEASE NOTE

The \$500.00 deadline is May 30, 2022.



Late Registration fees are as follows:

- ◆ After May 30, 2022: **\$600.00**
- ◆ June 21, 2022 (*walk-ins based on availability*): **\$650.00**

Registration fees must be paid in full prior to entering the meeting. Meeting registration fees will be refunded to those who cancel on or before May 30, 2022. Please allow 30 days after meeting for refund processing.

Alternate Registration options:

- **\$100** additional charge for unlimited virtual viewing for same company with in-person attendance - contact Jeff Kaar at jeffrey.kaar@pge.com
- **\$500** if your company would like to attend virtually **only**; \$500 covers unlimited virtual attendees from same company. Please contact Jeff Kaar at jeffrey.kaar@pge.com

NUPIC's goal is to make information available to multiple audiences that are not able to attend. Please consider bringing multiple staff members or allow them to participate virtually.



N U P I C

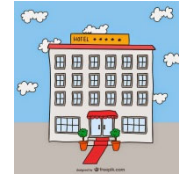
NUCLEAR PROCUREMENT ISSUES CORPORATION

NUPIC Vendor Conference Hotel Instructions:

At the same home page location on www.nupic.com, click on the "Hotel Registration - June 2022 NUPIC Conference". This will take you to the hotel website for our conference. The hotel website shows conference rate starts 3 days before and extends 3 days after our conference (limited availability) if you choose to arrive early or stay late to enjoy the area. Enter the dates you plan on arriving and departing and the website will walk you through the reservation and then sends you a confirmation email.

Hotel Registration Deadline is Saturday - May 27, 2022

Conference hotel is:
Detroit Marriott at the Renaissance Center,
 400 Renaissance Drive, Detroit, MI, 48243,
 Phone (313) 568-8000



The NUPIC Hotel Registration link is:

<https://book.passkey.com/go/NUPICattendee2022>

Once all required information has been entered, your reservation will be confirmed via email. Reservations can also be made by calling Hotel reservations: **(313) 568-8000** and request the **NUPIC** rate. The hotel will honor NUPIC rate 3 days prior and after the conference for reservations (if available).



“Detroit Marriott at the Renaissance Center”



N U P I C

NUCLEAR PROCUREMENT ISSUES CORPORATION

FUTURE NUPIC MEETING DATES & LOCATIONS - CONSIDER BRINGING YOUR SPOUSE!

By: Jeff Kaar, PGE

The VIC works hard to site our meetings in safe, centrally located and hopefully fun locations. Below is the list of meetings already under contract, location and dates. Annually I show my wife my anticipated trips and suggest she pick one that she might want to come along. I explain I typically have more time and less pressure during a NUPIC meeting and she should target those trips to “tag along”. Our hotel contract allows the same preferred rate 3 days prior and following our meeting, so both weekends are available for you to enjoy the area.

So copy and paste this list and send it to you “better half” and just maybe they will 1: complain less about your traveling and 2: come along and both of you have some fun with your company paying your expenses. Since the dates are fixed, using frequent flyer miles for far advance airline travel is way lower points then a trip in the next 2 months. Also most tickets via points can be changed or cancelled with low or no cost and the points return to your account. I just booked my wife’s ticket to join me for the January 2023 auditor training conference in Miami – 25K points round trip, a bargain! I could do it because the meeting date is fixed (so the beginning of the fun is known).

Take my advice (and help keep your retirement 401K fund from being coming a 201K if they leave you ...for being gone so much). Consider improving your work – life balance by including your spouse if one of our conference cities looks interesting. You have choices – Motown (Detroit), City of Brotherly Love (Philadelphia), Cruise Ship capitol (Miami), Just North of US Capitol (Baltimore) and Live Music capital of the US (Austin). Hope to see you both at one of our future meetings.

Future Meeting Dates

- ✦ **June 20-23, 2022: Detroit Marriott Renaissance Ctr – see picture on Page 9 of our hotel tower, with stop on the elevated downtown people mover!**
- ✦ **Sept. 12-14,2022: Philadelphia Sheraton Downtown**
- ✦ **January 30- Feb 2, 2023: Miami Marriott Biscayne Bay**
- ✦ **June 12-15, 2023: Denver, CO (Westin \$249)**
- ✦ **September 2023: TBD, but the state’s travel slogan is “Virginia is for Lovers” ...**
- ✦ **January 2024: TBD, but return to Clearwater, FL is looking good**
- ✦ **June 10-13, 2024: Baltimore, MD Inner Harbor Hyatt**
- ✦ **June 23-26, 2025: Sheraton Austin (Tx) at the Capitol – short walk to music district and world famous BBQ.**



N U P I C

NUCLEAR PROCUREMENT ISSUES CORPORATION

**2022
Joint Audit and
Limited Scope Audit
Schedule
April - December**

2022-2023 NUPIC AUDIT/SURVEY SCHEDULE

2022 April - June

| | NUPIC Supplier # | SR/CG/RA | Supplier | State | Audit # | Scheduled Month | Audit Entrance | Audit Exit | Supplier Expiration Date | 90 Day Grace Period | 25% Grace Period | Lead Utility | |
|--|------------------|-----------------------------------|---|--|---------|-----------------|----------------|-------------|--------------------------|---------------------|--------------------|--------------|-----|
| DATE Indicates audit date is past this date | | | | | | | | | | | | | |
| 2020 EXPIRED AUDITS | 5806 | SR | CW Nuclear Canada (Newmarket, ON, Canada) | INT | 24892 | Apr-20 | 09/19/22 | | | | 4/14/21 | CEG | |
| | 2277 | SR | WARTSILA - MULHOUSE CEDEX, FR | INT | 25016 | Mar-20 | 01/10/22 | In Progress | | | 1/28/21 | XEL | |
| 2021 Audits (open) | 5157 | SR | CW - Farris Engineering | INT | 25063 | May-21 | 03/28/22 | | 8/17/18 | 10/14/21 | 5/13/22 | DOM | |
| | 1457 | SR | DRS Consolidated Controls | CT | 25058 | Jun-21 | 04/11/22 | 4/14/22 | 9/28/21 | 12/28/21 | 6/28/22 | NEE | |
| | 3254 | SR | TE Connectivity | NC | 25116 | Dec-21 | 04/18/22 | 4/21/22 | 3/1/22 | 5/30/22 | 12/1/22 | TVA | |
| | 4440 | SR | Lake Engineering | RI | 25090 | Aug-21 | 04/25/22 | | 11/18/21 | 2/18/22 | 8/8/22 | DOM | |
| | 1926 | SR | Master Builders Solutions | OH | 25043 | Aug-21 | 04/25/22 | | 11/15/21 | 2/13/22 | 8/12/22 | DOM | |
| | 1739 | SR | Hydroaire | IL | 25079 | Dec-21 | 04/25/22 | | 3/21/22 | 6/19/22 | 12/16/22 | WCN | |
| | 1500 | SR | Enercon Services, Inc. | GA | 25215 | Jan-22 | 04/25/22 | | 4/12/22 | 7/11/22 | 1/7/23 | ENT | |
| | 1176 | SR | BWXT Canada | CD | 25045 | Dec-21 | 04/25/22 | | 3/15/22 | 6/13/22 | 12/10/22 | APS | |
| | 5755 | SR | Framatome Fuel (Paimboeuf) | FR | 25071 | Sep-21 | 05/02/22 | | 9/27/21 | 12/26/21 | 6/27/22 | CEG | |
| | 1604 | SR | Garlock Sealing | NY | 25076 | Dec-21 | 06/06/22 | | 3/7/22 | 6/7/22 | 12/7/22 | AUE | |
| APR | 2022 | 1850 | SR | KSB Se & Co. | NA | 25241 | Mar-22 | 04/04/22 | 4/7/2022 | 6/28/22 | 9/26/22 | 3/25/23 | CEG |
| | | 2337 | SR | Ametekolidstate Controls | OH | 25192 | Apr-22 | 04/04/22 | 4/8/2022 | 7/25/22 | 10/23/22 | 4/21/23 | EHN |
| | | 2629 | SR | Zetec, Inc. | WA | 25275 | Apr-22 | 04/04/22 | 4/8/2022 | 7/12/22 | 10/10/22 | 4/8/23 | TVA |
| | | 1529 | SR | Jensen Hughes | CA | 25238 | Feb-22 | 04/18/22 | 4/21/2022 | 5/10/22 | 8/8/22 | 2/4/23 | NEE |
| | | 1911 | SR | Mackson Nuclear Llc | SC | 25243 | Mar-22 | 04/18/22 | 4/21/2022 | 6/7/22 | 9/5/22 | 3/4/23 | DPC |
| | | 5270 | SR | Kinectrics, Inc. | ON | 25240 | Feb-22 | 04/25/22 | | 5/24/22 | 8/22/22 | 2/18/23 | CEG |
| | | 5043 | CG | Plastacor, Inc. | MA | 25283 | Mar-22 | 04/25/22 | | 6/6/22 | 9/4/22 | 3/3/23 | DPC |
| | | 5633 | CG | Engineering Solutions | AZ | 25279 | Mar-22 | 04/26/22 | | 6/13/22 | 9/11/22 | 3/10/23 | EHN |
| 2128 | CG | Parker Hannifin Corp (O-Ring Div) | KY | 25282 | Apr-22 | | | 7/3/22 | 10/1/22 | 3/30/23 | AUE | | |
| MAY | > 36 mth | 6248 | AQ | Strategic Alliance For Flex Emer Resp | AL | 25260 | May-22 | 05/23/22 | | 5/16/22 | 8/14/22 | 2/14/23 | TVA |
| | | 4686 | SR | Bergen Pipe Supports, Inc. | PA | 25199 | Feb-22 | 05/02/22 | | 5/17/22 | 8/15/22 | 2/15/23 | WCN |
| | | 1726 | SR | Holtec International (2 weeks 5/2 & 5/9) | NJ | 25232 | Mar-22 | 05/02/22 | | 6/7/22 | 9/5/22 | 3/8/23 | TLN |
| | | 5644 | RA | Gel Laboratories, | SC | 25226 | May-22 | 05/02/22 | | 8/14/22 | 11/12/22 | 5/15/23 | STP |
| | | 2191 | SR | Prime Technology, Llc | CT | 25253 | May-22 | 05/02/22 | | 8/16/22 | 11/14/22 | 5/17/23 | CEG |
| | | 1450 | SR | 3m Technical Ceramics, Inc. | OK | 25204 | Apr-22 | 05/09/22 | | 7/19/22 | 10/17/22 | 4/19/23 | CEG |
| | | 1785 | SR | Cameron Energy Services | CA | 25201 | Feb-22 | 05/16/22 | | 5/23/22 | 8/21/22 | 2/21/23 | PGE |
| | | 5740 | SR | Super Radiator Coils | MN | 25261 | Mar-22 | 05/16/22 | | 6/6/22 | 9/4/22 | 3/7/23 | DPC |
| | | 2204 | SR | Zachry Nuclear Engineering, Inc. | CT | 25273 | Mar-22 | 05/16/22 | | 6/27/22 | 9/25/22 | 3/28/23 | EHN |
| | | 1369 | SR | Flow America, Llc - Houston, Tx | TX | 25304 | Apr-22 | 05/16/22 | | 8/15/22 | 11/13/22 | 5/16/23 | TVA |
| | | 1121 | SR | Analysis & Measurement Services Corp | TN | 25193 | Apr-22 | 05/23/22 | | 7/12/22 | 10/10/22 | 4/12/23 | DPC |
| | | 2505 | SR | United Controls International, Inc. | GA | 25274 | May-22 | 05/23/22 | | 8/2/22 | 10/31/22 | 5/3/23 | PSE |
| | | 1005 | SR | Westinghouse Electric Sweden Ab | SW | 25272 | May-22 | 05/23/22 | | 8/23/22 | 11/21/22 | 5/24/23 | TLN |
| | | 4187 | CG | Met One Instruments, Inc. | OR | 25285 | May-22 | | | 8/8/22 | 11/6/22 | 5/9/23 | ENT |
| | 1801 | SR | John Crane Inc. | IL | 25239 | May-22 | 05/23/22 | | 8/23/22 | 11/21/22 | 5/24/23 | SNC | |
| JUN | >36 m | 2339 | SR | Sonic Systems International | TX | 25258 | Feb-22 | 06/07/22 | | 5/23/22 | 8/21/22 | 2/21/23 | DPC |
| | | 2290 | SR | Schulz Electric (A Timken Brand) | CT | 25255 | Jun-22 | 06/06/22 | | 9/13/22 | 12/12/22 | 6/14/23 | CEG |
| | | 1701 | SR | Hayward Tyler, Inc. | VT | 25231 | May-22 | 06/06/22 | | 8/2/22 | 10/31/22 | 5/3/23 | TVA |
| | | 2053 | SR | NAC International, Inc. | GA | 25246 | May-22 | 06/06/22 | | 8/2/22 | 10/31/22 | 5/3/23 | DPC |
| | | 1431 | CG | Ashcroft, Inc. | CT | 25278 | May-22 | 06/06/22 | | 8/8/22 | 11/6/22 | 5/9/23 | CEG |
| | | 4245 | SR | Exelon Powerlabs (Mid Atlantic Division) | PA | 25219 | Jun-22 | 06/13/22 | | 9/20/22 | 12/19/22 | 6/21/23 | DTE |
| | | 5237 | SR | Serco Inc. | NM | 25256 | May-22 | 06/13/22 | | 8/1/22 | 10/30/22 | 5/2/23 | CEG |
| | | 4252 | SR | Pentas Controls, Inc. | AZ | 25250 | May-22 | 06/27/22 | | 8/1/22 | 10/30/22 | 5/2/23 | NEE |
| | | 1436 | NJ | Curtiss-Wright Steam & Air Solutions | SC | 25305 | Jul-22 | 06/28/22 | | 10/25/22 | 1/23/23 | 7/26/23 | CEG |
| | | 6068 | SR | Nusource, Llc | VA | 25249 | Jun-22 | | | 9/12/22 | 12/11/22 | 6/13/23 | ENT |

Audit/Survey Information - Summary

Search Criteria: Category = Audits - NJ, LA and GA ONLY, Member Criteria = Leads Only, Audit/Survey Status = All Audit/Surveys, Start Date = 07/01/2022, End Date = 12/31/2022, Report Type =

| Supp # | Supplier Name, Location | Aud # | Lead Utility | Cat | Scheduled | Audit Entrance Date | Audit End Date | Closed Date | Team Members | Peer Review | Last Update Date | Days Open |
|--------------------|--|-------|--------------|-----|-----------|---------------------|----------------|-------------|-----------------------------------|-------------|------------------|-----------|
| 1097 (SR/PR/NP) | AAF INTERNATIONAL CORPORATION - LOUISVILLE, KY 1096 (SR/EX) AAF INTERNATIONAL - COLUMBIA, MO | 25189 | STP | NJ | 12/2022 | 2/6/2023 | | | CEG, IBE, SNC | DOM | | |
| 4800 (SR/PR/NP) | ABB MOTORS AND MECHANICAL, INC. - FLOWERY BRANCH, GA | 25315 | NPP | LA | 11/2022 | | | | EHN, ENT, TVA | | | |
| 1031 (SR/PR/NP) | ABB, INC. - FLORENCE, SC | 25190 | SNC | NJ | 12/2022 | | | | KNP, NEE, OPG, SNC, TVA | XEL | | |
| 2163 (SR/PR/NP) | ABSG CONSULTING INC. - IRVINE, CA 6275 (SR/PR) ABSG CONSULTING, INC. - GAITHERSBURG, MD | 25191 | APS | NJ | 11/2022 | | | | PGE, STP, TLN, XEL | XEL | | |
| 1413 (SR/PR/NP) | AMETEK INSTRUMENTATION & SPECIALTY CONTROLS - GRAND JUNCTION, CO | 25303 | CEG | LA | 10/2022 | 10/10/2022 | | | DPC, ENT, TLN | | | |
| 2396 (SR/PR/NP) | ANSYS, INC. - CANONSBURG, PA | 25329 | SNC | NJ | 08/2022 | 8/29/2022 | | | AEP, BPL, DPC | | | |
| 1666 (SR/PR/NP) | ASC ENGINEERED SOLUTIONS LLC (ANVIL EPS) - NORTH KINGSTOWN, RI 6280 (SR/EX) ASC ENGINEERED SOLUTIONS LLC DBA ANVIL SERVICES DIVISION - NORTH KINGSTOWN, RI 4763 (SR/EX) ASC ENGINEERED SOLUTIONS LLC DBA BASIC PSA, INC. - JOHNSTOWN, PA | 25195 | PSE | NJ | 11/2022 | | | | APS, BPL, KNP, NEE, PGE, TLN, TVA | CEG | | |
| 2428 (RA/PR/NP) | ATI ENVIRONMENTAL, INC. - NORTHBROOK, IL | 25197 | WCN | NJ | 10/2022 | 12/12/2022 | | | CEG, EHN, NEE | XEL | | |
| 1275 (SR/PR/NP) | CARBOLINE GLOBAL INC. - ST. LOUIS, MO 5936 (SR/EX) CARBOLINE GLOBAL INC. - GREEN BAY, WI | 25202 | XEL | NJ | 08/2022 | 9/21/2022 | | | AEP, CFE, DPC, WCN | ENT | | |
| 5835 (SR/PR/NP) | CHALMERS & KUBECK - ASTON, PA | 25205 | CEG | NJ | 12/2022 | | | | PSE, SNC, TLN | DPC | | |
| 1346 (SR/PR/NP) | CONTINENTAL DISC CORPORATION, LLC - LIBERTY, MO | 25207 | ENW | NJ | 08/2022 | 6/6/2022 | | | CEG, DOM, SNC, WCN | DPC | | |

Audit/Survey Information - Summary

Search Criteria: Category = Audits - NJ, LA and GA ONLY, Member Criteria = Leads Only, Audit/Survey Status = All Audit/Surveys, Start Date = 07/01/2022, End Date = 12/31/2022, Report Type =

| Supp # | Supplier Name, Location | Aud # | Lead Utility | Cat | Scheduled | Audit Entrance Date | Audit End Date | Closed Date | Team Members | Peer Review | Last Update Date | Days Open |
|--------------------|---|-------|--------------|-----|-----------|---------------------|----------------|-------------|--|-------------|------------------|-----------|
| 1545 (SR/PR/NP) | CURTISS-WRIGHT NUCLEAR DIVISION (QUALTECH NP) - CINCINNATI, OH | 25208 | EHN | NJ | 07/2022 | 9/19/2022 | | | CFE, DTE, NEC, NEK, STP | PGE | | |
| 1865 (SR/PR/NP) | CURTISS-WRIGHT NUCLEAR DIVISION, LMT - HUTCHINSON, MN | 25209 | LUM | NJ | 09/2022 | | | | DOM, NEC, XEL | SNC | | |
| 2056 (SR/PR/NP) | CURTISS-WRIGHT NUCLEAR DIVISION, SCIENTECH EP - DANBURY, CT | 25210 | SNC | NJ | 11/2022 | 11/14/2022 | | | AEP, APS, CEG, DOM, ENW, NPP | AUE | | |
| 1436 (SR/PR/NP) | CURTISS-WRIGHT STEAM & AIR SOLUTIONS - SUMMERVILLE, SC | 25305 | CEG | NJ | 07/2022 | 1/23/2023 | | | AUE, DOM, NEE, NPP, WCN, XEL | | | |
| 1417 (SR/PR/NP) | DOMINION ENGINEERING, INC. - RESTON, VA | 25212 | ENT | NJ | 11/2022 | 12/6/2022 | | | DOM, OPG, STP | AUE | | |
| 1426 (SR/PR) | DRAGON VALVES, INC. - NORWALK, CA | 25213 | APS | NJ | 09/2022 | 10/3/2022 | | | CEG, DPC, TVA, WCN | NEE | | |
| 5280 (SR/PR/NP) | DST COMPUTER SERVICES S. A. - GENEVA, CH | 25214 | AUE | NJ | 12/2022 | | | | ENT, NEE | EHN | | |
| 1293 (RA/PR/NP) | ENERGYSOLUTIONS - BARNWELL, SC | 25217 | NPP | NJ | 12/2022 | 12/5/2022 | | | EHN, NEE, OPP, PGE, SCE, STP, TVA, XEL | WCN | | |
| | 5380 (RA/EX) ENERGYSOLUTIONS (DC&S FACILITY) - BARNWELL, SC | | | | | | | | | | | |
| | 6172 (RA/EX) ENERGYSOLUTIONS CORPORATE OFFICE - SALT LAKE CITY, UT | | | | | | | | | | | |
| | 1295 (RA/EX) ENERGYSOLUTIONS - CHARLOTTE, NC | | | | | | | | | | | |
| | 5621 (RA/EX) DURATEK COMMERCIAL SERVICES - MEMPHIS, TN | | | | | | | | | | | |
| | 2299 (RA/EX) ENERGYSOLUTIONS (COMMERCIAL PROCESSING/SERVICES) - OAK RIDGE, TN | | | | | | | | | | | |
| | 5329 (RA/EX) ENERGYSOLUTIONS (COMMERCIAL SERVICES) - KINGSTON, TN | | | | | | | | | | | |
| | 4564 (RA/EX) ENERGYSOLUTIONS LLC - CLIVE DISPOSAL SITE - CLIVE, UT | | | | | | | | | | | |
| | 4830 (RA/EX) ERWIN RESINSOLUTIONS, LLC - ERWIN, TN | | | | | | | | | | | |
| 2624 (SR/PR/NP) | ENERSYS DELAWARE INC. - READING, PA | 25218 | DOM | NJ | 08/2022 | 8/22/2022 | | | BPL, CEG, ENT, NEE | ENW | | |
| | 5214 (SR/EX) ENERSYS DELAWARE INC. - HAYS, KS | | | | | | | | | | | |
| 1322 (SR/PR/NP) | FAIRBANKS MORSE, LLC - BELOIT, WI | 25220 | PGE | NJ | 11/2022 | 9/26/2022 | | | DTE, EHN, PSE, WCN, XEL | SNC | | |

Audit/Survey Information - Summary

Search Criteria: Category = Audits - NJ, LA and GA ONLY, Member Criteria = Leads Only, Audit/Survey Status = All Audit/Surveys, Start Date = 07/01/2022, End Date = 12/31/2022, Report Type =

| Supp # | Supplier Name, Location | Aud # | Lead Utility | Cat | Scheduled | Audit Entrance Date | Audit End Date | Closed Date | Team Members | Peer Review | Last Update Date | Days Open |
|--------------------|--|-------|--------------|-----|-----------|---------------------|----------------|-------------|---|-------------|------------------|-----------|
| 1476 (SR/PR/NP) | FLOWSERVE CORPORATION - RALEIGH, NC | 25222 | ENW | NJ | 09/2022 | 8/22/2022 | | | CFE, KNP, PGE, TLN, TPC, WCN | PSE | | |
| 5169 (SR/PR/NP) | FRAMATOME - CHALON SUR SAONE CEDEX, FR 1588 (SR/EX) AREVA NP - PARIS, FR | 25224 | CEG | NJ | 08/2022 | 9/26/2022 | | | AUE, ETN, VAT, WCN | WCN | | |
| 1617 (SR/PR/NP) | GE-HITACHI NUCLEAR ENERGY AMERICAS LLC - WILMINGTON, NC 5501 (SR/EX) GE NUCLEAR ENERGY - SAN JOSE, CA 1629 (SR/EX) GE HITACHI NUC ENERGY, PHILADELPHIA SERVICE CENTER - PHILADELPHIA, PA 6257 (SR/EX) GE HITACHI NUCLEAR ENERGY-VALLECITOS NUCLEAR CENTER - SUNOL, CA | 25225 | TLN | NJ | 07/2022 | 7/25/2022 | | | AEP, APS, AUE, CEG, DOM, DTE, EHN, ENT, ENW, IBE, LUM, NEE, NPP, PSE, STP, TLN, TVA, WCN, XEL | SNC | | |
| 1619 (SR/PR/NP) | GLOBAL NUCLEAR FUEL - AMERICAS - WILMINGTON, NC 5808 (SR/EX) GLOBAL NUCLEAR FUEL - JAPAN CO., LTD. - KANAGAWA-KEN, | 25228 | NPP | NJ | 07/2022 | 7/25/2022 | | | CEG, CFE, DTE, EHN, ENT, ENW, IBE, PSE, SNC, VAT | NEE | | |
| 5843 (SR/PR/NP) | GRAFTEL, LLC - ROSELLE, IL | 25229 | DOM | NJ | 07/2022 | 9/19/2022 | | | AUE, CEG, DPC, TLN | NEE | | |
| 6134 (SR/PR/NP) | GUTOR ELECTRONIC LLC - 5430 WETTINGEN, CH | 25230 | TVA | NJ | 11/2022 | | | | BPL, BPL, DOM, DPC | CEG | | |
| 1709 (SR/PR/NP) | HENRY PRATT COMPANY - AURORA, IL | 25341 | SNC | NJ | 09/2022 | 9/26/2022 | | | APS, DPC, ENT, NEE, TLN, TVA | AEP | | |
| 6076 (SR/PR/NP) | HOWDEN USA COMPANY - DEPEW, NY 6152 (SR/EX) HOWDEN NORTH AMERICA INC. - MEDINA, OH | 25234 | DTE | NJ | 10/2022 | 10/24/2022 | | | DTE, ETN, OPG, SNC, TVA | NEE | | |
| 1349 (SR/PR/NP) | IMI CCI - RANCHO SANTA MARGARITA, CA | 25235 | NEE | NJ | 11/2022 | | | | APS, DOM, NBP, NPP, PGE | DTE | | |
| 1929 (SR/PR/NP) | MASTER-LEE ENERGY SERVICES CORPORATION - LATROBE, PA | 25245 | CEG | NJ | 11/2022 | 1/9/2023 | | | EHN, PSE, SNC | SNC | | |
| 4659 (SR/PR/NP) | MISTRAS SERVICES - WATERFORD, CT | 25316 | CEG | LA | 12/2022 | | | | NEE, TLN | | | |

Audit/Survey Information - Summary

Search Criteria: Category = Audits - NJ, LA and GA ONLY, Member Criteria = Leads Only, Audit/Survey Status = All Audit/Surveys, Start Date = 07/01/2022, End Date = 12/31/2022, Report Type =

| Supp # | Supplier Name, Location | Aud # | Lead Utility | Cat | Scheduled | Audit Entrance Date | Audit End Date | Closed Date | Team Members | Peer Review | Last Update Date | Days Open |
|-----------------|--|-------|--------------|-----|-----------|---------------------|----------------|-------------|-------------------------|-------------|------------------|-----------|
| | 5860 (SR/EX) MISTRAS SERVICES - NORTHEAST REGIONAL OFFICE - TRAINER, PA | | | | | | | | | | | |
| | 1333 (SR/EX) MISTRAS SERVICES - BURR RIDGE, IL | | | | | | | | | | | |
| | 5714 (SR/EX) MISTRAS SERVICES DIVISION - MERRILLVILLE - MERRILLVILLE, IN | | | | | | | | | | | |
| 2018 (SR/PR/NP) | NCS CORPORATION (NUCLEAR CONT. SYS) - COLUMBUS, OH | 25248 | DPC | NJ | 10/2022 | 10/3/2022 | | | AEP, DOM, EHN, ENW | STP | | |
| | 6274 (SR/EX) NCS CORPORATION (NUCLEAR CONT.SYS) - COLUMBUS, OH | | | | | | | | | | | |
| 1598 (SR/PR/NP) | REUTER-STOKES LLC - TWINSBURG, OH | 25302 | CEG | LA | 11/2022 | | | | DPC, PSE, TVA | | | |
| 2255 (SR/PR/NP) | RSCC WIRE & CABLE LLC - EAST GRANBY, CT | 25254 | XEL | NJ | 12/2022 | 12/5/2022 | | | AEP, ENW, ETN, PGE | TVA | | |
| 1712 (SR/PR/NP) | SGS NORTH AMERICA, INC. - VALLEJO, CA | 25257 | DOM | NJ | 08/2022 | 8/22/2022 | | | AEP, APS, LUM, PGE | ENT | | |
| 5258 (SR/PR/NP) | TE CONNECTIVITY - FAIRVIEW, NC | 25263 | SNC | NJ | 09/2022 | 11/14/2022 | | | AUE, DTE, IBE, NBP, TVA | CEG | | |
| 1705 (SR/PR/NP) | TECHNETICS GROUP COLUMBIA (FORMERLY GARLOCK HELICOF) - COLUMBIA, SC | 25264 | NEE | NJ | 12/2022 | | | | CEG, IBE, PGE, SNC, STP | ENT | | |
| 2454 (SR/PR/NP) | TIOGA PIPE, INCORPORATED - EASTON, PA | 25266 | CEG | NJ | 10/2022 | 10/24/2022 | | | CFE, EHN, PSE, WCN | DPC | | |
| | 5811 (SR/EX) TIOGA PIPE COMPANY - PHILADELPHIA, PA | | | | | | | | | | | |
| 5278 (SR/PR/NP) | TYCO ELECTRONICS - RAYCHEM - OTTOBRUNN, GY | 25269 | DOM | NJ | 11/2022 | 12/5/2022 | | | APS, AUE, ENT, SNN | LUM | | |
| 2512 (SR/PR/NP) | UNITED E&C, INC. - PISCATAWAY, NJ | 25270 | CEG | NJ | 07/2022 | 8/15/2022 | | | CFE, DTE, ENT, LUM | WCN | | |
| | 5929 (SR/EX) UNITED E&C, INC. - INDIAN LAND, SC | | | | | | | | | | | |
| | 5930 (SR/EX) UNITED E&C, INC. - WARRENVILLE, IL | | | | | | | | | | | |
| 5970 (RA/PR/NP) | WASTE CONTROL SPECIALISTS LLC (WCS) - ANDREWS, TX | 25271 | LUM | NJ | 10/2022 | | | | CEG, STP, TLN, XEL | DTE | | |



N U P I C

NUCLEAR PROCUREMENT ISSUES CORPORATION

**2022
Survey Schedule
July - December**

Audit/Survey Information - Summary

Search Criteria: Category = Surveys - Surveys ONLY, Member Criteria = Leads Only, Audit/Survey Status = All Audit/Surveys, Start Date = 07/01/2022, End Date = 12/31/2022, Report Type = Summary

| Supp # | Supplier Name, Location | Aud # | Lead Utility | Cat | Scheduled | Audit Entrance Date | Audit End Date | Closed Date | Team Members | Peer Review | Last Update Date | Days Open |
|--------------------|---|-------|--------------|-----|-----------|---------------------|----------------|-------------|---------------|-------------|------------------|-----------|
| 3061 (CG/PR/NP) | ABB INSTALLATION PRODUCTS INC. - MEMPHIS, TN 2446 (CG/EX) ABB INSTALLATION PRODUCTS INC. - BYHALIA, MS 5203 (CG/EX) ABB INSTALLATION PRODUCTS MONTERREY S DE RL DE CV - GUADELUPE, NL 2904 (CG/EX) ABB INSTALLATION PRODUCTS CARIBE LLC - VEGA BAJA, PR | 25276 | ENW | NC | 09/2022 | 10/11/2022 | | | PSE, WCN, WCN | | | |
| 1077 (CG/PR/NP) | ALDEN RESEARCH LABORATORY, LLC. - HOLDEN, MA | 25277 | DOM | NC | 07/2022 | 7/11/2022 | | | APS, DPC, NEE | | | |
| 5342 (CG/PR/NP) | FLEXITALLIC US, LLC - DEER PARK, TX | 25280 | CEG | NC | 08/2022 | 8/29/2022 | | | PGE, TLN, XEL | | | |
| 2783 (CG/PR/NP) | HENKEL CORPORATION - ROCKY HILL, CT 4843 (CG/EX) HENKEL LOCTITE CORPORATION-CLEVELAND MANUFACTURING - CLEVELAND, OH 2785 (CG/EX) HENKEL LOCTITE DISTRIBUTION CENTER - LOUISVILLE, KY 2786 (CG/EX) HENKEL LOCTITE CORPORATION PUERTO RICO MANUFACT. - SABANA GRANDE, PR | 25281 | DPC | NC | 09/2022 | | | | AUE, DTE, ENT | | | |
| 1774 (CG/PR/NP) | IRON MOUNTAIN RECORDS MANAGEMENT INC. - ROSENDALE, NY | 25339 | TLN | SMC | 09/2022 | | | | | | | |
| 2844 (CG/PR/NP) | TE CONNECTIVITY (FORMERLY POTTER BRUMFIELD) - FAIRVIEW, NC | 25284 | ENW | NC | 07/2022 | 9/20/2022 | | | STP, TVA | | | |