

NUCLEAR | South Carolina's Clean Energy Solution



---

## Construction Update

New Nuclear Deployment

SCANA/South Carolina Electric & Gas

---

# VC Summer Units 2 & 3 Project Team

- **Utilities**

- Owner –SCE&G – 55% Ownership
- Santee Cooper – 45% Ownership



- **AP1000 Designer**

- Westinghouse –Standard Plant Designer



- **General Contractor**

- Chicago Bridge & Iron (CB&I)
- CB&I subcontractors



## Project Statistics

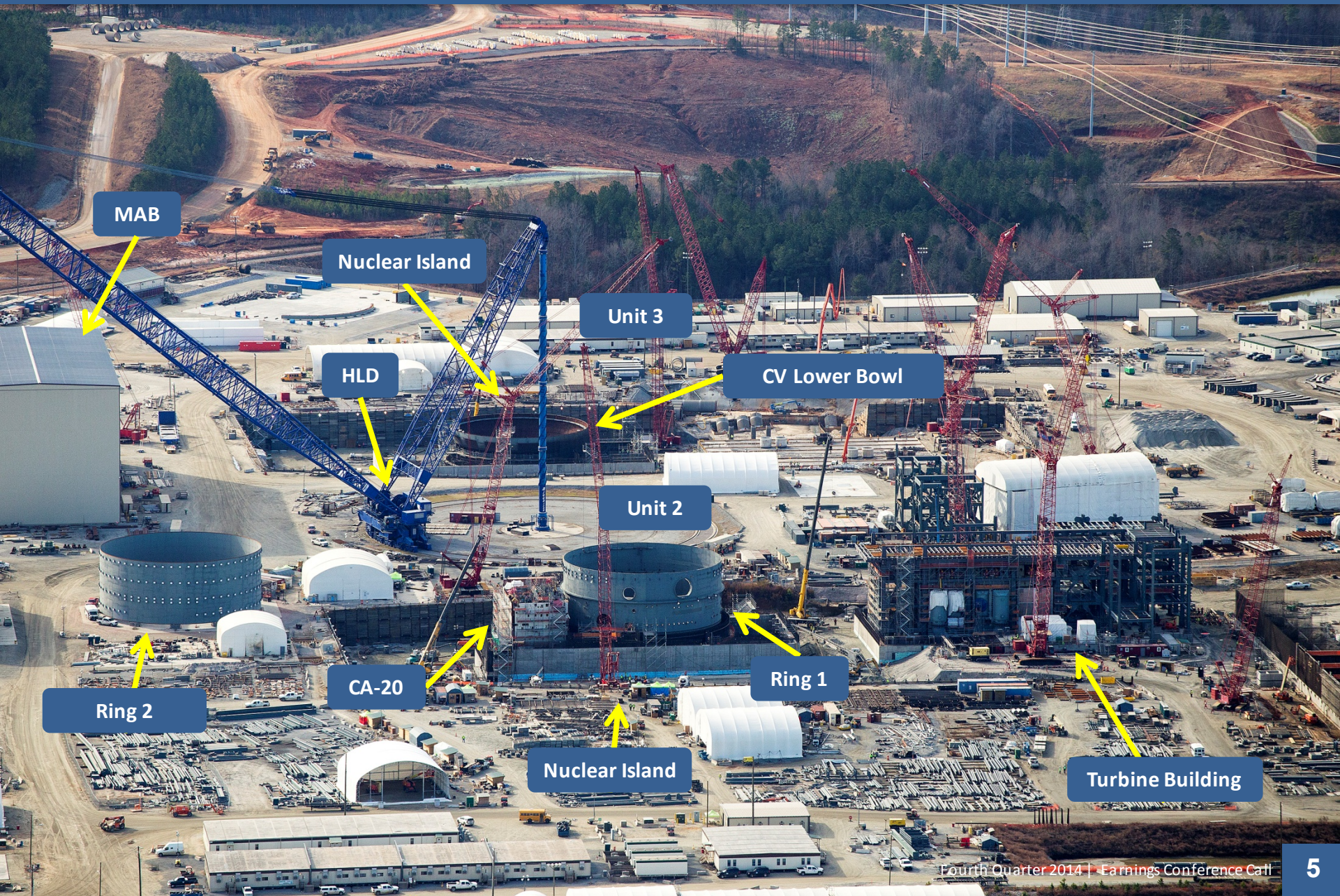
- Approximately 3100 construction workers now onsite
- About **4500** temporary jobs during peak construction
- **600-800** fulltime jobs when plants are operational
- AP1000 design covers 25 acres per unit
- Unit 2 and 3 and support structures will cover 240 acres
- Construction uses approximately 1000 acres

# Milestones for 2014

- Placement of Ring 1 on unit 2
- Placement of CA-20 on NI-2
- Placement of the unit 3 CVBH
- Exterior wall placements begin in unit 3
- Turbine foundation start unit 3
- Placement of layer 2 in CVBH unit 2
- Placement of CA-05 in unit 2
- Place layer 1 concrete in CVBH unit 3

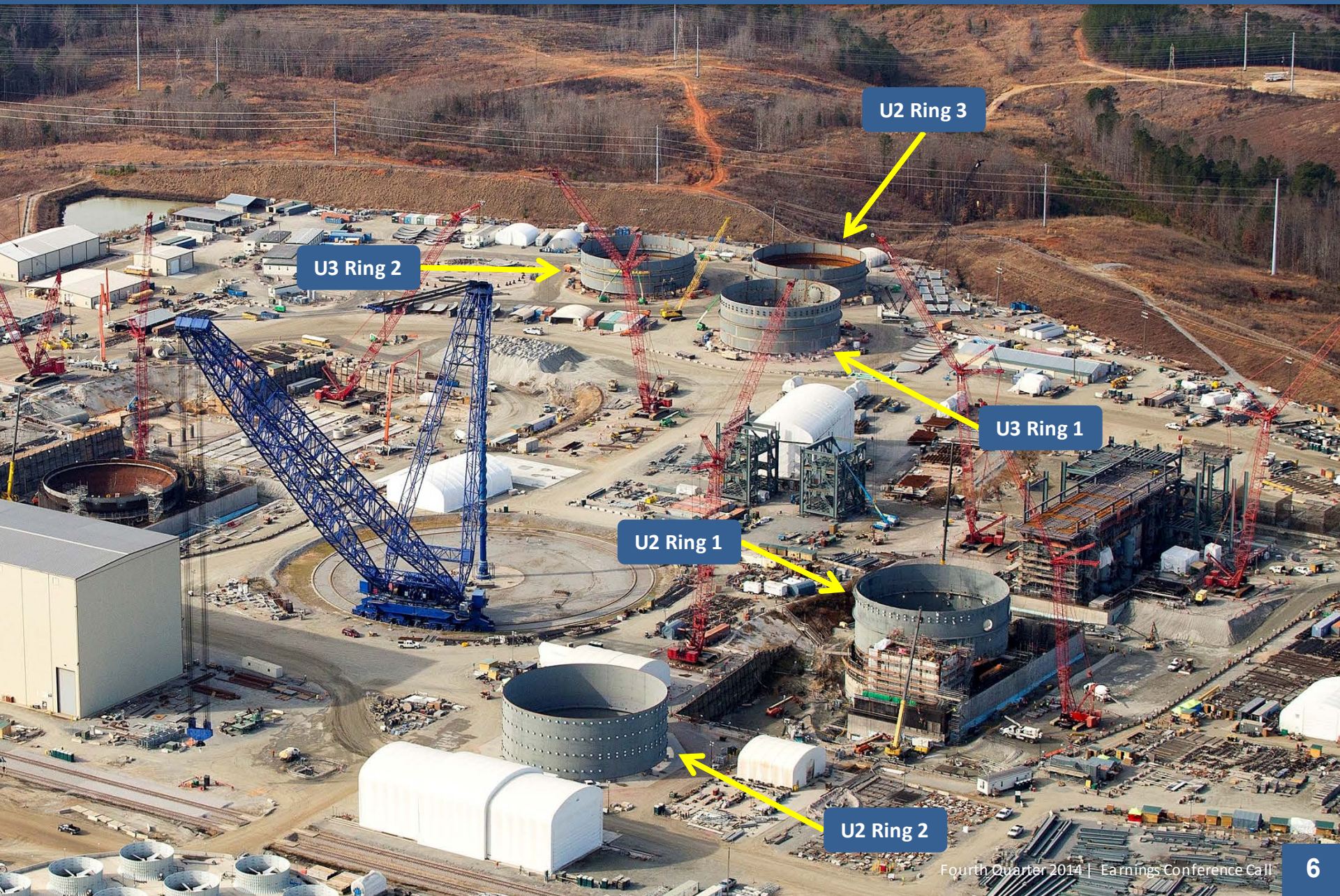


# NND Site Aerial View





# Containment Vessel Rings



U3 Ring 2

U2 Ring 3

U3 Ring 1

U2 Ring 1

U2 Ring 2

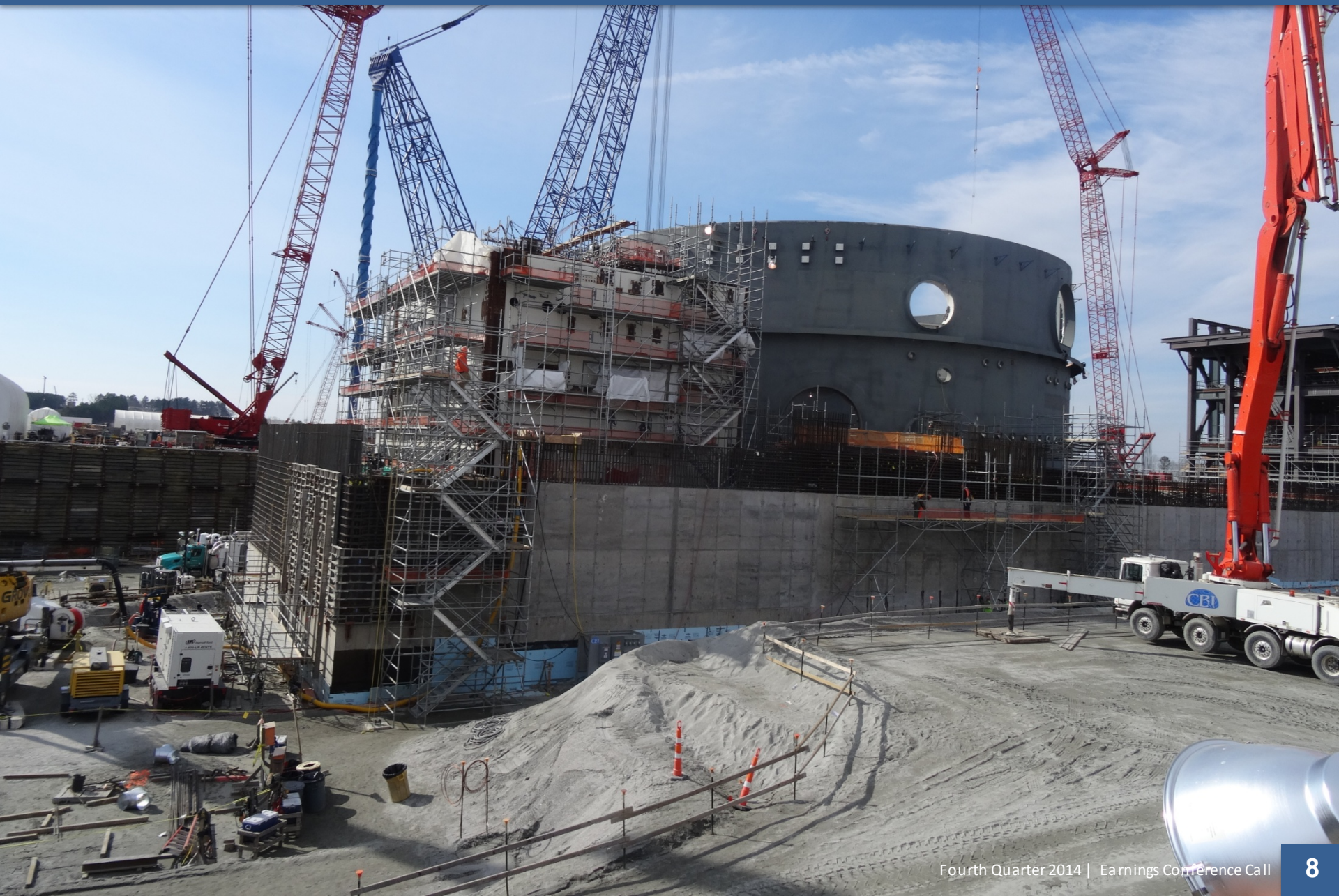


# Low Profile Cooling Towers

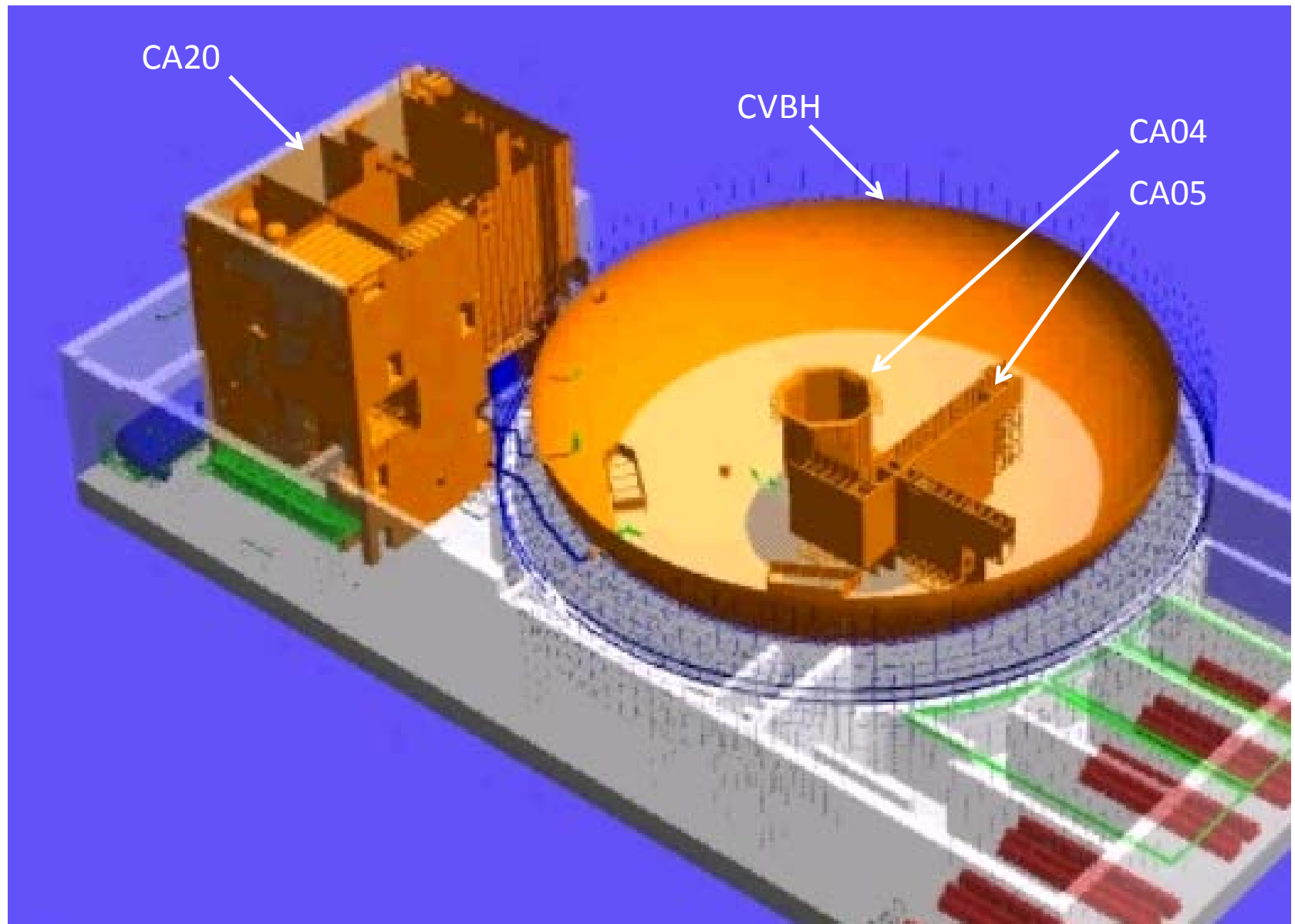




# Unit 2 Nuclear Island



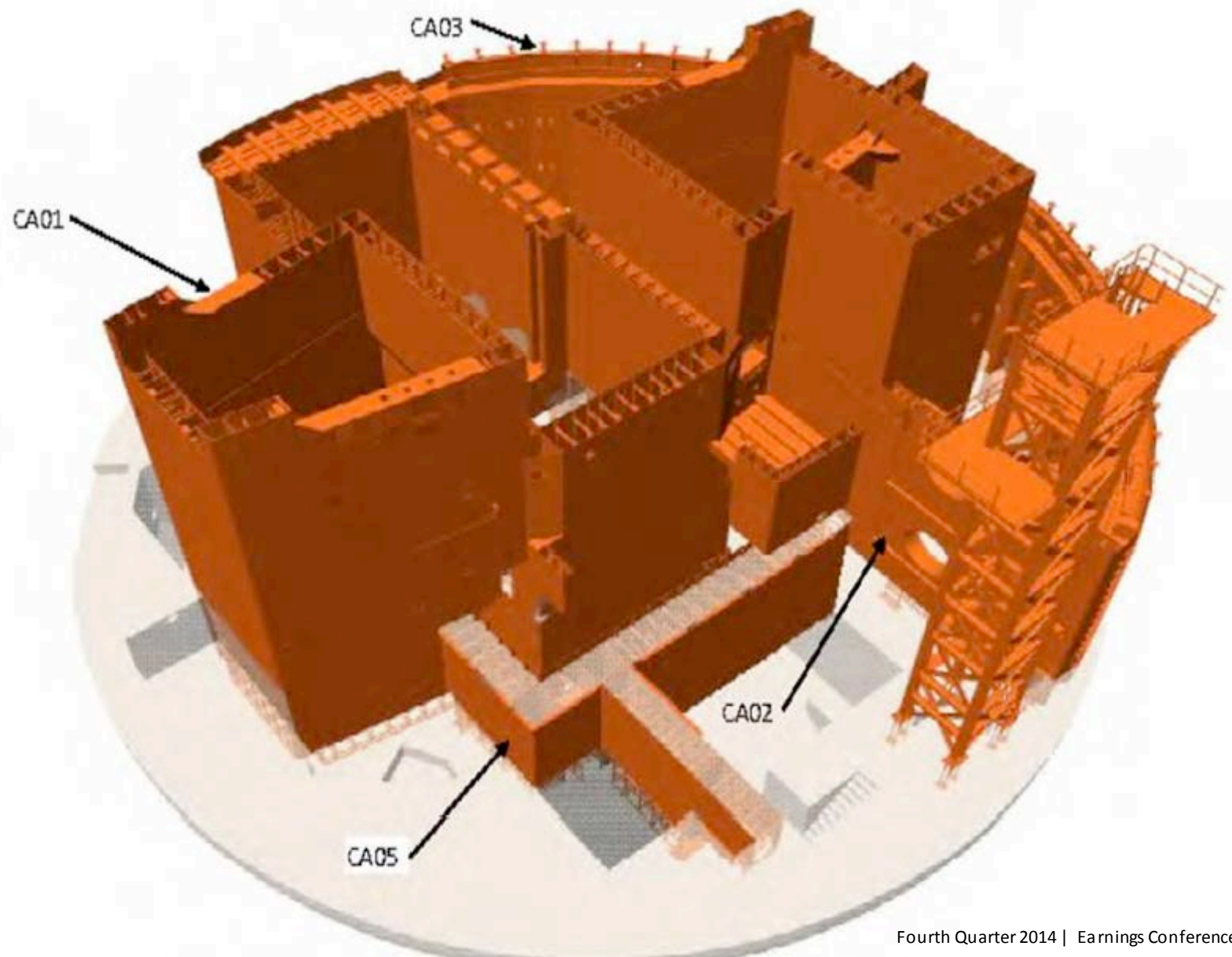
# Upcoming Construction Milestones



CA Modules in Nuclear Island



# CA Modules





# Unit 2 Nuclear Island – Layer 2 Concrete in Containment







# CA20 Transport





# Unit 2 CA01

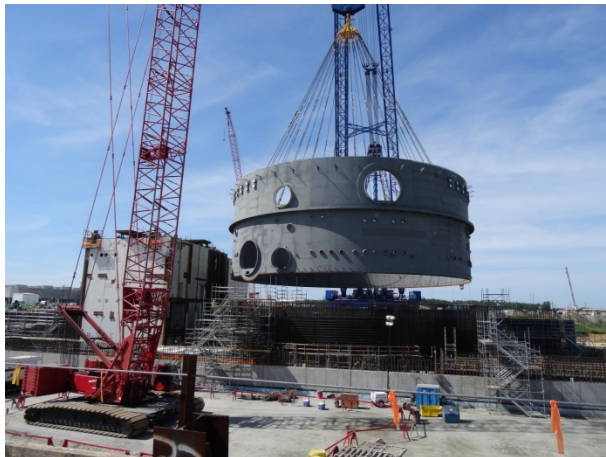


# First Unit 3 CA-01 Sub-Module from Japan Shipped





# Unit 2 Containment Vessel Ring 1







## Unit 2 CA-05





# Unit 2 Shield Building Panels

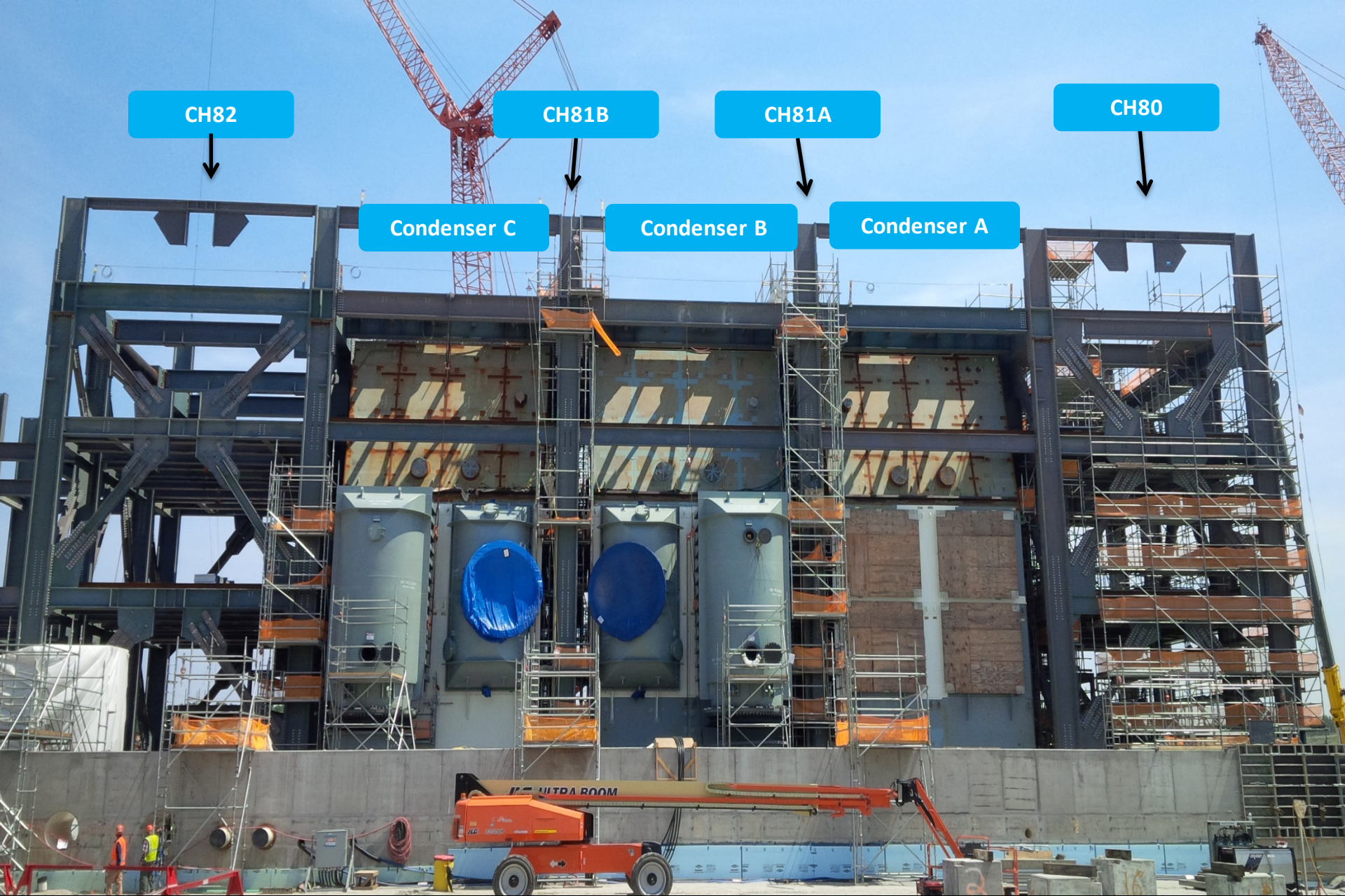




# Unit 3 Nuclear Island







# U2 Turbine Building



# Unit 3 Turbine Building

CH Steel Assembly



Foundation and Piping





Drinking Water Pipe Installation



# Reactor Vessel Shipment



Rail (2 days)

- RV – Schnabel Railcar – 265 ft
- RV Head – 32' FD Railcar – 108 ft
- Two 60' Idelers Railcars – 120 ft
- Schnabel Car Tooling – 89 ft
- Caboose 50 ft



# Unit 2 Steam Generator

